

## PRESIDENT'S MESSAGE

*"The key is to keep company with people who uplift you, whose presence call forth your best." ~Elizabeth Willett*

Happy New Year!! The holiday season has come and gone. 2008 is behind us and now is the time many of us reflect on what we'd like to achieve in 2009. I always look at the New Year as a fresh start. It's an opportunity to identify the good things to continue in the New Year, evaluate the areas to improve and re-evaluate and strengthen your goals. To give us a head start in 2009, Dr. Allison Barbin is our featured speaker for our January 13<sup>th</sup> meeting. She will share information on Women's Health to get us on track to lead healthier lives. As women, we often don't make the time to keep ourselves healthy. Please join us at Portobello's (located at the corner of Jefferson @ Old Hammond).



Our Holiday Social was an evening of fun and laughter. Thanks to all our Representatives who contributed to the YMCA Angel Tree program. Your gifts brightened the holiday for a lot of children. It is touching to see the generous spirit that lives in EWI.

The arrival of New Years also brings EWI Renewal. You've been receiving lots of information from Corporate about the many exciting things ahead for EWI. The Board has been very busy working on the plans for our Chapter this year. They have many exciting ideas to continue the growth, rewards and success of EWI. You as a Representative play an essential role in that success through your support and commitment to EWI. Thanks for your dedication to our Chapter and EWI!! Together we can accomplish great things.

Please contact a Board Member to join in the fun of upcoming events.

Share the Secret of EWI!!

### IN THIS ISSUE

President's Message	Cover
Calendar of Events	Cover
Membership	Page 2
December Meeting Recap	Page 3
Birthdays & Anniversaries	Page 4
Meeting Information	Page 5
Chapter Business	Page 5
Speaker Bio	Page 5
Officers & Directors	Page 6

### CALENDAR OF EVENTS

#### January

13 BR Chapter Meeting— Portobello's

#### February

10 BR Chapter Meeting—TBA

## BATON ROUGE CHAPTER MEMBER FIRMS

- ◇ Averett Aircraft Services, LLC ◇
- ◇ Baton Rouge Area Foundation ◇
- ◇ Baton Rouge Coca-Cola Bottling Company ◇
- ◇ Baton Rouge Duplicating ◇
- ◇ Donnie Jarreau Construction ◇
- ◇ Ellis Insurance & Financial Group ◇
- ◇ Excel Group, Inc ◇
- ◇ Lee Michaels Fine Jewelry ◇
- ◇ Phelps Dunbar ◇
- ◇ PPC Mechanical Seals ◇
- ◇ Redemptorist-Diocesan Catholic High School ◇
- ◇ Region's Bank ◇
- ◇ Renal Associates of Baton Rouge ◇
- ◇ Safety Council ◇
- ◇ Thomas, Wilson, Ragusa, Uffman & Company, CPAs ◇
- ◇ Wright & Percy ◇
- ◇ YMCA of the Capital Area ◇

## EWI®: CONNECTIONS | CAREERS | COMMUNITY

### Benefits to the Company

Enjoy access to an international business base, discover new opportunities with other members and increase local and international contacts. Chapter and corporate activities offer continuous events to showcase your firm's products and services.

- Increased business relationships through member firm contacts and access to PULSE, a bimonthly newsletter, and an International Directory (a listing of thousands of decision makers).
- Recognition as a business leader through news coverage and community involvement.
- Awareness of cutting-edge business and civic issues through EWI programs.
- Opportunity to provide quality professional development and continuing education scholarships for promising employee(s).

### Benefits to the Individual

Develop and utilize personal talents, learn business skills through hands-on EWI programs and become involved in local philanthropic activities.

- Cultivate personal and professional development through conferences, seminars and an extensive network of contacts.
- Gain leadership skills through training programs and service on committees and boards.
- Earn Continuing Education Units.
- Become involved in community, scholarship and philanthropy projects at the grass roots level.
- Scholarships in continuing education.

## December Christmas Meeting

The Baton Rouge Chapter of EWI® held it's December Christmas Social at Ruffino's on Highland Rd. in Baton Rouge.



**Pictured L to R:** Rose Wilson, Pamela Thorning, LaDonnis Kimble



**Pictured L to R:** Krista Dettman and Kelsey Funes Kornick



EWI Baton Rouge Chapter pictured with gifts donated to the YMCA's Angel Tree

### Current Membership Status

As of December 2008

Current Member Firms.....	17
Current Member Reps.....	22
Firms with Two Reps.....	3
Firms with Three Reps.....	1
Firms without Reps.....	2
Sustaining Members.....	4

### January Member Assignments

Greeters: Melissa Averett & Leah Frederic

Registration Table: Pamela Thorning

The Board has voted to eliminate monthly door prizes. We will still offer 50/50.

### Firm/Member Anniversaries

6 Years – Excel Add'l. Rep. – Lauren Champagne  
9 Years – Thomas, Wilson, Ragusa, Uffman – CPAs

### Executive Women International

Corporate Office  
515 South 700 East, Suite 2A  
Salt Lake City, UT 84102-2801  
Phone 801.355.2800  
Fax 801.355.2852

Contact Information  
Email: [ewi@executivewomen.org](mailto:ewi@executivewomen.org)  
Website: [www.executivewomen.org](http://www.executivewomen.org)

### Happy Birthday

Representative's:  
Kelli J. Bass Jan 3

Sustaining  
Jackie Lee Airhart Jan 11

### EWI<sup>®</sup> MISSION AND VISION

#### MISSION

Executive Women International<sup>®</sup> is an organization which brings together key individuals from diverse businesses for the purpose of:

- Promoting member firms
- Enhancing personal and professional development, and
- Encouraging community involvement

#### VISION

To be the Leading Connection for Business Professionals

If we missed an Executive or Representative birthday please contact Jackie Airhart at [jlairhart1@cox.net](mailto:jlairhart1@cox.net) to update our records



### SHARE THE NEWS!

Send submissions or corrections for the Chapter Pulse:

Contact: Dianna Braud  
Phone: 225-282-3297  
Fax: 225-766-1099  
Email: [dbraud@safetylca.org](mailto:dbraud@safetylca.org)

## January Meeting Information

**Program: Women's Health**

**Date:** January 13, 2009

**Time:** 6:00 p.m.

**Place: Portobello's**  
7622 Old Hammond Hwy. (Corner of Old Hammond and Jefferson at the old Kiva's location)

**Menu: Caesar Salad with your choice of:**

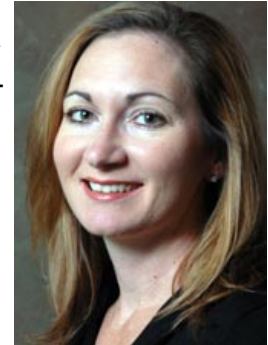
- \*Parmigiana Crusted Salad
- \*Cilantro-Jack Salad
- \*Fire Grilled Chicken Marsala
- \*Garliques Shrimp
- \*Cedar Roasted Salmon
- \*Red Stick Burger
- \*Shrimp Fettuccine

**Dessert:** Tiramisu

**RSVP:** Kelsey Funes  
225-376-0258  
funesk@phelps.com

## January Meeting Guest Speaker

Dr. Allison Barbin is a native of nearby Donaldsonville, Louisiana. She received her medical degree from Louisiana State University and completed her internship and residency through Louisiana State University Earl K. Long Medical Center.



Dr. Barbin is board-certified in Internal Medicine with the American Board of Internal Medicine. She was in private practice locally as a partner of Internal Medicine Associates of Louisiana before joining the Baton Rouge Clinic.

Dr. Barbin will join us at our meeting on Tuesday, January 13 and will provide an overview of things you need to know about women's health at all stages of life.

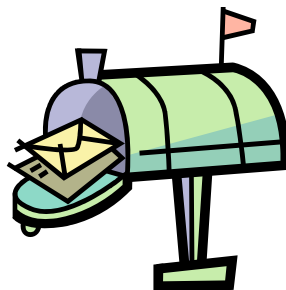
## EWI Membership Renewals

### Renewal dues are coming soon!

Watch your mailbox!

Friendly Reminder

Firms need to remit all unpaid balances to the chapter by the end of December. Thank you.



## Posting of Prospective New Member

**Firm:** 2121 Design

**Representative:** Francelle Theroit

**Major Classification:** Communication Service

**Minor Classification:** Media Administration

If no written objection is received from a current member firm executive within ten (10) days of the date of this posting, these firms will be contacted for membership. Written objections should be sent to Melissa Averett, EWI Membership Director, Averett Aircraft Services, 9210 Plank Road, Baton Rouge, LA 70811 or [maverett04@cox.net](mailto:maverett04@cox.net)

## Officers and Directors



### PRESIDENT

*Krista Dettman*  
Wright & Percy  
kdettman@wright-percy.com  
225-336-5322



### VICE PRESIDENT/PUBLIC RELATIONS

*Rose Wilson*  
YMCA of the Capital Area  
rwilson@ymcabatonrouge.org  
225-923-0653 Ext. 4



### SECRETARY

*Pamela Thorning*  
Baton Rouge Duplicating Products  
Pamela@brdp.com



### TREASURER/SERGEANT-AT-ARMS

*Alexis Luker*  
PPC Mechanical Seals  
admin@PPCMechanicalSeals.com  
225-356-4333



### MEMBERSHIP DIRECTOR

*Deanne Bonvillain*  
EXCEL Group  
dbonvillain@excelusa.com  
225-677-8700, ext 223



### PROGRAM CO-DIRECTOR/ASIST CHAIR

*Susie Furr*  
Phelps Dunbar  
furrs@phelps.com  
225-376-0258



### PROGRAM CO-DIRECTOR

*Kelsey Funes*  
Phelps Dunbar  
Kelsey.funes@phelps.com  
225-376-0258



### WAYS & MEANS DIRECTOR

*Leah Frederic*  
EXCEL Group  
lfrederic@excelusa.com  
225-677-8700, ext. 227



### PUBLICATIONS DIRECTOR

*Dianna Braud*  
Safety Council of La Capital Area  
dbraud@safetylca.org  
225-282-3297



### READING RALLY CHAIR

*Lauren Champagne*  
EXCEL Group  
lchampagne@excelusa.com  
225-677-8700, ext. 236

## Advisors



### PAST PRESIDENT

*Mary Alice Stanford*  
Renal Associates of BR  
mstanford@renalassociates.com  
225-767-4893, ext. 223



### PARLIAMENTARIAN/BYLAWS

*Jackie Airhart*  
Sustaining Member  
jlairhart1@cox.net